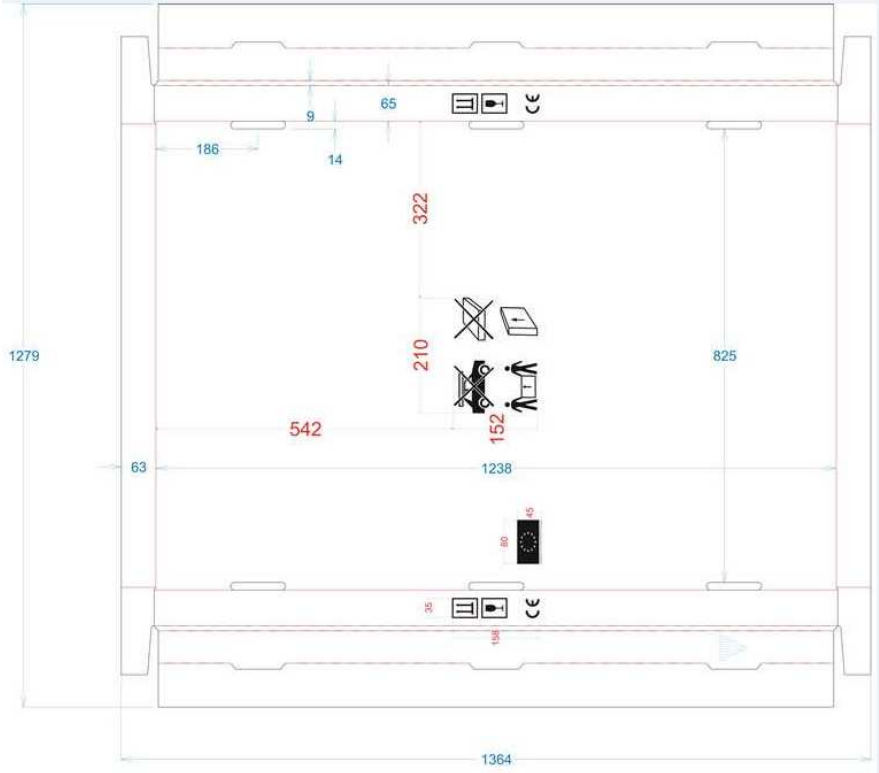


# Packaging standard for Remix and Easy

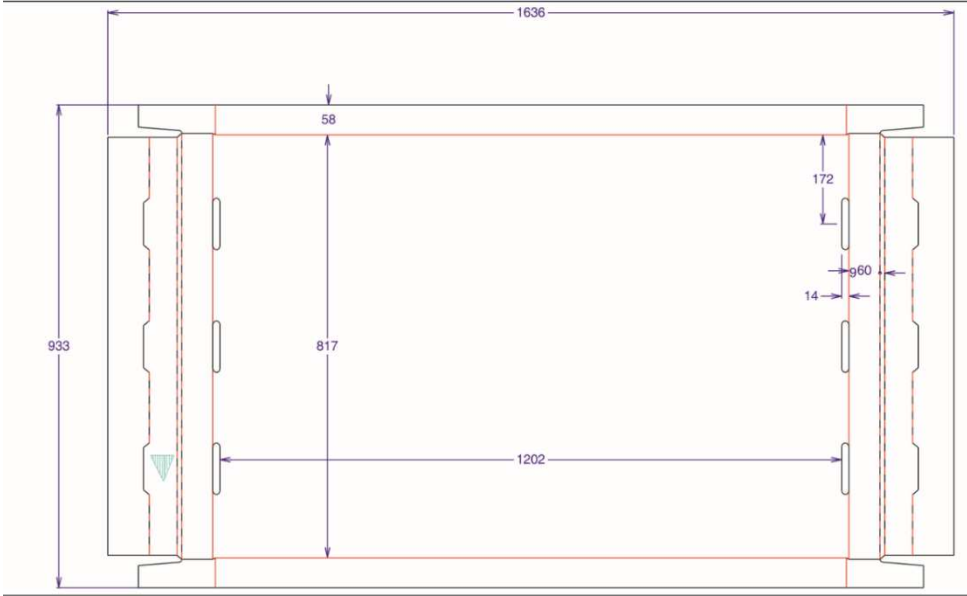
The beauty of precision.



# Technical drawing of box: example for showertray 1200x900



Top of the box



Bottom of the box

The beauty of precision.

# Cardboard specification



Parameter	Value
Packaging components	1x top of the box 1x bottom of the box Based on FEFCO 0331
Material	Corrugated cardboard
Type of flute	Flute BE, external and internal KRAFT
GMS	590g/m <sup>2</sup>
Burst test	11000 kPa
Edge Cruch	7900 NS
Finishing	Printed marks with CE, recycling class, EU production, storage recommendations.  No varnish on the cardboard.  2 Sensea labels assembled + Marmite system label

# Top and bottom of the box



**Top of the box**



**Bottom of the box**

The beauty of precision.

# Labels placement on the box



The beauty of precision.

## Easy packaging standard



Each box contains:  
Shower tray (bottom site down)  
3 cardboard fillers  
Instruction



Each box is assembled  
with 4 PET bands

The beauty of precision.

# Remix 1 (Spain, Italy, Greece, Cyprus)



Each box contains:  
Shower tray (bottom site up)  
covered with an interfacing and paper.  
3 cardboard fillers  
Instruction



Each box is assembled  
with 4 PET bands

The beauty of precision.

## Remix 2 (France, Poland)



Each box contains:  
Shower tray (bottom site up) covered  
with an intersection and paper  
3 cardboard fillers  
Instruction



Each box is assembled  
with 4 PET bands

The beauty of precision.