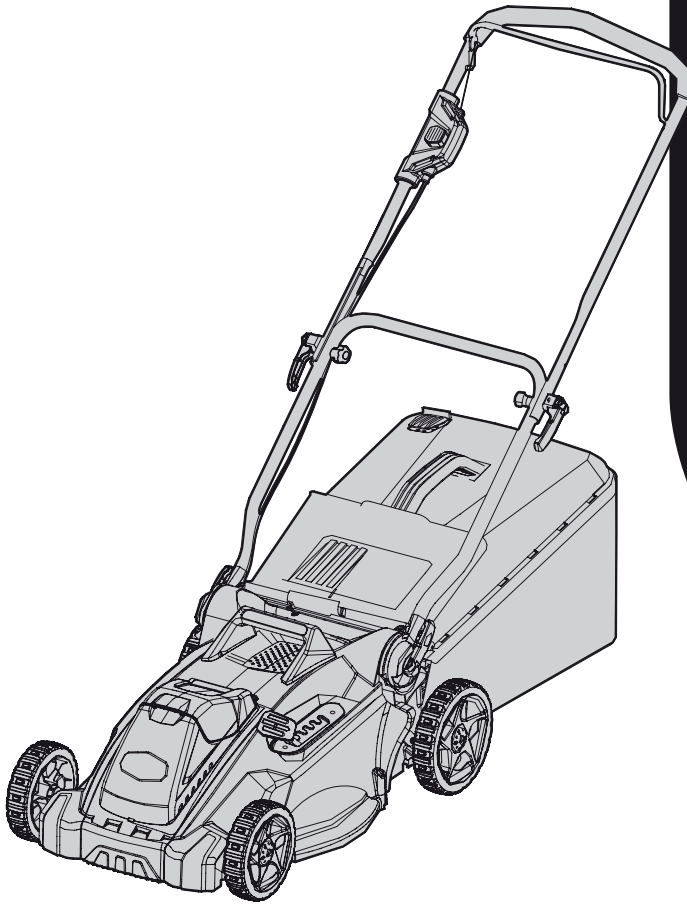




# STERWINS

400 LI-2  
400 LI X-2



FR / Caractéristiques

ES / Características

PT / Características

IT / Caratteristiche

EL / Χαρακτηριστικά

PL / Charakterystyki

RU / Характеристики

UK / Характеристики

RO / Specificații

EN / Characteristics

3 276004 549440  
3 276005 045057



Traduction de la version originale du mode d'emploi / Traducción de las Instrucciones originales / Tradução das Instruções Originais / Traduzione delle istruzioni originali / Μετάφραση των πρωτότυπων οδηγιών / Tłumaczenie instrukcji oryginalnej / Перевод оригинала инструкции / Переклад оригінальної інструкції / Traducerea instrucțiunilor originale / Original Instructions **Lawnmower**

- Read these instructions carefully. Familiarise yourself with all the controls and operation of the mower.
- Never allow children and people unfamiliar with these instructions to use the mower. Local laws may restrict the user's age.
- Never mow when people, children and animals are nearby
- The operator/user is responsible for accidents or risks that may arise for other people or their property.
- This machine should only be used to mow the grass in your garden. Do not use it in public parks, sports pitches, forests, etc.
- The manufacturer shall not be held liable for any use contrary to the instructions in this manual.
- This mower may be used by people with reduced physical, sensory or mental capacities or whose experience or knowledge are insufficient, on condition that they are under supervision or have received instructions in using the mower in complete safety and clearly understands the potential dangers.
- Children must not use the mower as a toy.
- This mower must not be used by children. Keep the mower out of the reach of children.
- There is a risk of injury caused by stones or other objects thrown out by the mower during use.
- Do not use the mower when you are tired, under the effects of alcohol, medicines, drugs or any similar type of products.
- The mower must only be used with the battery supplied and fitted. Do not use other ways of making the mower operate. Do not modify the mower. A qualified technician should change the battery or make any repairs.
- Use only batteries recommended by the manufacturer. Using other batteries can cause accidents, physical injury, etc. Please refer to the table of technical specifications for the correct battery type to be used.
- Only recharge the battery using the charger supplied. Do not use other models because there is a risk of damaging the mower. If you have to change the mower, only exchange it for a model recommended by the manufacturer.
- When the battery is not used, it should be stored away from metal objects such as paper clips, coins, keys, nails, screws or any metal object that could come into contact with its terminals. Short-circuiting the battery terminals can cause burns or a fire.
- If the battery is subject to excessive usage conditions, liquid may escape from it. Avoid all contact with liquid. If this liquid accidentally contacts your skin, rinse thoroughly with water. In case of contact with the eyes, you should also consult a doctor. Liquid escaping from the battery terminals can cause irritation and burns.

## SYMBOLS



Read the instruction manual



Keep people away from the work area



Beware of the blades. The blades continue to rotate after the machine stops.  
**Remove disabling device before maintenance.**



Do not expose to rain and moisture



Wear eye protection (safety glasses)



Wear a protective hat



Wear protective gloves



Wear a protective equipment



Wear protective footwear



Recyclable equipment

## A. Assembly

Please refer to the instruction manual for assembly. The diagrams will help you assemble the machine correctly.

If a part is missing or damaged, do not use the mower and return it to your retailer.

### 1 - Fitting the grass box

- Raise the rear cover.
- Hold the grass box by its handle and lift it, then place it under the rear cover so that the hooks on the frame of the grass box fit into the support grooves on the handle.
- Release the rear cover. When the grass box is correctly fitted, the hooks sit firmly in the grooves.

### 2 - Installing the Mulching plug

- Raise the rear cover and hold it up.
- Hold the Mulching plug by its handle and insert it while angling it slightly, as shown.
- Push the Mulching plug fully in
- Lower the rear cover.

## B. Starting the mower

Do not start the mower unless it is fully assembled. Check that the battery is properly installed and the machine correctly assembled.

To start the mower, push the contact key into its keyhole. Hold the starting button down. Lift the switch lever towards the top of the handle, then release the starting button.

**CAUTION: When the mower is has been switched off, the blades continue to turn for a few seconds; do not touch the underside of the mower. Wait for the blades to stop completely before taking further action.**

## INSTRUCTIONS FOR USE

### Preparation

- Always wear safety shoes and long trousers while mowing.
- Wear protective equipment: gloves, safety glasses, and a mask.
- Do not operate the mower with bare feet or when wearing open sandals.
- Do not wear loose clothing.
- Thoroughly inspect the area where the mower is going to be used and remove all stones, sticks, wires, bones or other objects that could interfere with mowing.
- Always check that the blades, bolts and blade casing are not worn or damaged. Replace worn or damaged blades and bolts to ensure they are correctly balanced.
- Be careful, when adjusting the machine, not to trap your fingers between moving blades and fixed parts of the machine.

### Operation

- Only mow in daylight or with good artificial lighting.
- When possible, avoid using the mower in damp grass.
- Always maintain your balance on slopes.
- Walk, never run.
- When using rotary mowers with wheels, mow across slopes and never from top to bottom.
- Take great care when changing direction.
- Do not mow on slopes that are too steep.
- Do not use the mower on slopes of more than 15°.
- Do not mow close abrupt changes in level, holes and banks. You could slip and fall if you do not have good grip.
- Be very careful when using the machine while moving backwards or when pulling the mower towards you.
- Stop the blade if the mower has to be tipped up to be carried, when crossing over surfaces other than grass and when carrying the mower to the area to be mown.
- Never operate the mower with faulty protective devices or shields, or without safety devices fitted, such as grass deflectors / boxes.
- Switch on the motor according to the instructions and with your feet well away from the blade.

- Do not tip the mower when starting the motor, unless the mower must be tipped up to start it. If so, do not tip it up more than necessary and only lift the part furthest from you. Always ensure that both your hands are in the operating position before putting the mower back on the ground.
- Do not put your hands or feet near or under the rotating parts. For lawn mowers, always keep clear of the opening to the grass box.
- Never lift and never carry the mower while the motor is running.
- Stop the mower:
  - Whenever you leave the machine unattended;
  - Before removing an obstruction;
  - Before checking, cleaning or working on the mower. After hitting a foreign object, inspect the mower for damage and have it repaired if necessary;
  - If the mower begins to vibrate abnormally (check immediately).

### **C. Maintenance and storage**

- Keep all the nuts, bolts and screws fully tightened to ensure that the mower is in good working order.
- Check the grass box for wear and damage frequently.
- For safety reasons, replace worn or damaged parts. Use only original manufacturer's parts and accessories.
- Ensure that only replacement cutting parts of the correct type are used.
- When maintaining the blades, be aware that, even if the power supply is turned off, the blades can still be moved.
- Always allow the machine to cool before putting it away.
- There is no need to lubricate parts of the machine.
- When you want to store the mower :
  - Release the switch lever.
  - Fold the handles as shown in the diagram
  - Store the mower.

## TROUBLESHOOTING GUIDE

PROBLEMS	CAUSES	SOLUTIONS
<b>The handle is not correctly fitted</b>	The panel bolts are not correctly inserted	Adjust the height of the handle and check that the panel bolts are correctly inserted
	The quick-fastening levers are not tightened	Tighten them
<b>The mower does not start</b>	The battery charge is low	Recharge the battery
	The battery no longer holds its charge or no longer works	Change the battery
<b>The mower cuts unevenly</b>	The grass is not uniform or thick, or the cutting height was not correctly adjusted	Check the height of the wheels. All the wheels must be set to the same cutting height so that the mower can cut evenly
<b>Mulching is not done correctly</b>	The grass cuttings are damp and sticking to the mower	Wait for the lawn to dry before mowing
<b>The mower is difficult to push</b>	The grass is long, the rear panel of the mower and the blade are dragging in very dense grass, or the cutting height is set too low	Raise the cutting height
<b>The grass cuttings are not collected properly in the grass box</b>	The cutting height is too low	Raise the cutting height
<b>The mower vibrates at high speed</b>	The blade is out of balance or worn	Change the blade
	The motor shaft is twisted	Turn off the motor and inspect the mower. Get the mower repaired by an approved repair centre.
<b>The motor stops while mowing</b>	The cutting height is too low	Raise the cutting height
	The battery is discharged	Recharge the battery

## TECHNICAL SPECIFICATIONS

<b>Mower model</b>	<b>400 Li-2</b>	<b>400 Li X-2</b>
Voltage	36V DC	36V DC
Cutting width	400 mm	400 mm
Cutting height	20 mm-70 mm	20 mm-70 mm
Free running speed	3500 rpm	3500 rpm
Sound pressure level	LpA: 79 dB - KpA: 2,5dB(A)	LpA: 79 dB - KpA: 2,5dB(A)
Sound power level	LwA: 88.6dB(A), kwA:1.72 dB(A)	LwA: 88.6dB(A), kwA:1.72 dB(A)
Vibrations	2.5 m/s <sup>2</sup> - k=1.5 m/s <sup>2</sup>	2.5 m/s <sup>2</sup> - k=1.5 m/s <sup>2</sup>
Number of batteries	1 unit	Not included
Grass box capacity	50 L	50 L
Weight	17 kg	< 17 kg
Protection	IPX1	IPX1
<b>Lithium-ion battery</b>	<b>36V Li-2</b>	<b>Not included</b>
Capacity	4Ah	4Ah
Number of cells	20	20
<b>Battery charger</b>	<b>36 VC Li-2</b>	<b>Not included</b>
Input	100-240 V AC, 50 Hz, 1.9 A max	100-240 V AC, 50 Hz, 1.9 A max
Output	36 V DC, 2.0 A	36 V DC, 2.0 A
Recharging temperature range	7-40°C	7-40°C

The total stated vibration value was measured using a standard test method and can be used to compare one mower with another. The total stated vibration value can also be used as part of a preliminary exposure estimate. Vibrations caused during actual use of the machine may differ from the total stated value, depending on how the mower is used. It is necessary to identify safety measures to protect the user, which are based on an estimated exposure under actual conditions of use (taking account of all parts of the operating cycle, such as times when the mower is switched off and when it is running, in addition to when it starts running).



## ENVIRONMENT

### Selective collection of electrical and electronic waste.



Li-Ion



Electrical products must not be discarded in household products. In accordance with the European WEEE Directive 2012/19/EC for scrapping electrical and electronic equipment and its transposition into national law, used electrical products must be collected separately and discarded in special collection sites.

Contact your local authority or your retailer for advice about recycling.

### Disposal of an exhausted battery pack.

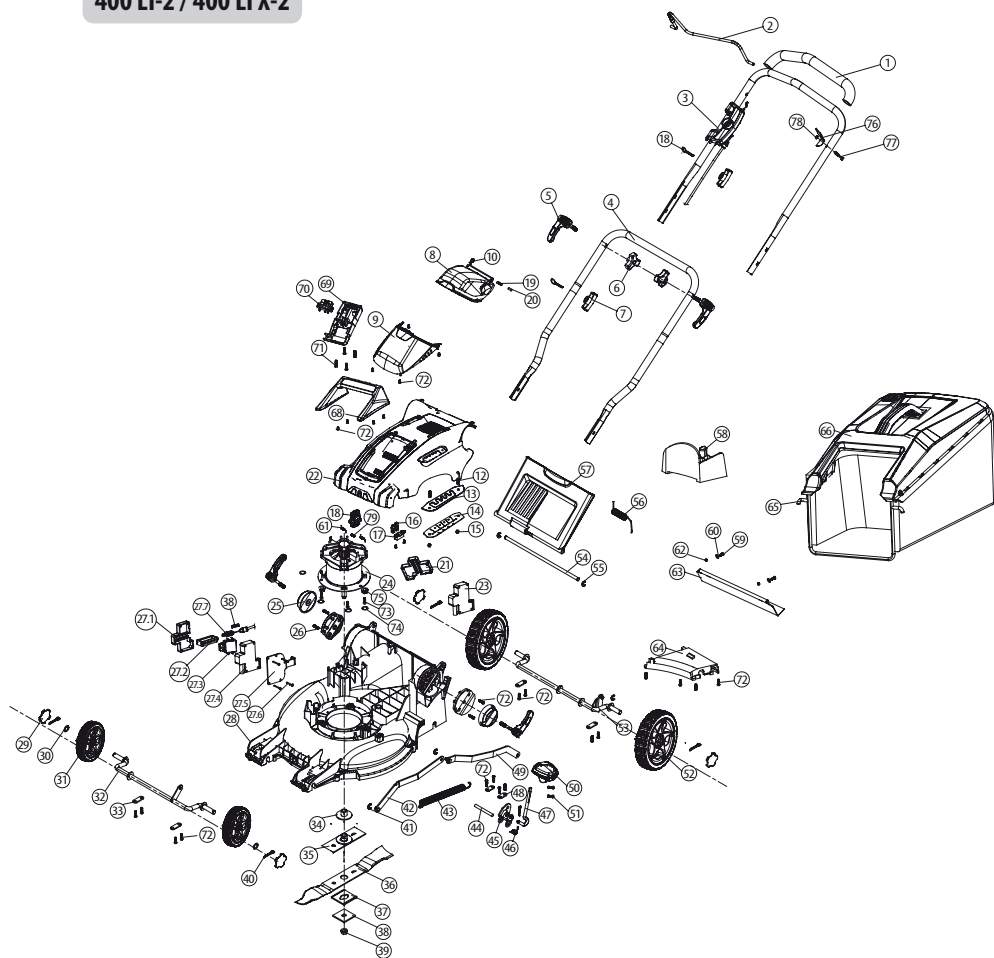
To preserve natural resources, please recycle or dispose of the battery pack properly. This battery pack contains Li-ion batteries. Consult your local waste authority for information regarding available recycling and/or disposal options. It will then be recycled or dismantled in order to reduce the impact on the environment. Electric and electronic equipment can be hazardous for the environment and for human health since they contain hazardous substances.

Discharge your battery pack by operating your tool, then remove the battery pack from the tool housing and cover the battery pack connections with heavy-duty adhesive tape to prevent short circuit and energy discharge. Do not attempt to open or remove any of the components.

- 1 - STERWINS products are designed to the most demanding quality standards for consumer products. STERWINS products are covered by a 24-month guarantee from the date of purchase. This guarantee applies to all material and manufacturing faults. No other claim of any kind can be accepted, whether direct or indirect, and whether relating to people and/or the machine.
- 2 - In the event that there is a problem with your mower or it breaks down, you should always contact your STERWINS retailer in the first instance. In most cases, the STERWINS retailer will be able to resolve the problem and repair the fault.
- 3 - Repairing or replacing parts will not extend the initial guarantee period.
- 4 - Faults arising from wear or improper use are not covered by the guarantee. Amongst other things, this includes switches, short-circuits of electrical protection devices and motors, if worn.
- 5 - You claim relating to the guarantee can only be accepted if:
  - Proof of the purchase date may be provided in the form of a sales receipt.
  - No repair and/or replacement has been carried out by a third party.
  - The mower has not been used incorrectly (overloading the machine or use of unapproved accessories).
  - No damage has been caused by outside influences or foreign bodies, such as sand or stones.
  - No damage has been caused by failure to follow the safety guidelines and operating instructions.
- 6 - The guarantee conditions are applied in conjunction with our terms of sale and delivery.
- 7 - Faulty mowers returned to STERWINS through your STERWINS retailer will only be accepted by STERWINS if they are correctly packaged. If faulty products are sent directly to STERWINS by the consumer, STERWINS will not reimburse the shipping costs.
- 8 - STERWINS will not accept delivery of badly-packaged products.

# DETAILED VIEW

400 LI-2 / 400 LI X-2



400 LI-2



**ADEO Services**  
**135 rue Sadi Carnot**  
**CS 00001**  
**59790 Ronchin - France**

Declares that cordless electric lawn mower 400 Li-2 36V / 400 Li X-2 36V  
Complies with the requirements of Machine Directive 2006/42/EC,  
as well as the following European Directives:

LVD Directive 2006/95/EC  
EMC Directive 2004/108/EC  
ROHS Directive 2011/65/EC  
NOISE Directive 2000/14/EC and 2005/88/EC, Annex VI  
Measured Sound power level 88.6 dB(A)  
Guaranteed Sound power level 96 dB(A)

Notified body of Noise directive :  
Société Nationale de Certification et d'Homologation S.A.R.L. (SNCH)  
Address : 2a. Kalchesbruck, L-1852 LUXEMBOURG  
Notified Body number : 0499

It also complies with the following standards:  
EN60335-1:2012  
EN60335-2-77:2010  
EN55014-1: 2006+A1+A2  
EN55014-2: 1997+A1+A2  
EN 62233:2008  
IEC 62321:2008

Shanghai, 15/06/2015



**Bruno POTTIE**  
Director of international  
buying ADEO SERVICES

Batch No:  
Last two numbers of the year CE marking applied: 15



ADEO Services  
135 Rue Sadi Carnot  
CS 00001  
59790 RONCHIN - France

ТОВ «Леруа Мерлен Україна»,  
вул. Полярна 17а, м. Київ  
04201, Україна

ООО ЛЕРУА МЕРЛЕН ВОСТОК,  
141031, Московская область,  
Мытищинский район, г. Мытищи,  
Осташковское шоссе, д.1, РОССИЯ

\* Garantie 2 ans / 2 años de garantía / Garantia de 2 anos /  
Garanzia 2 Anni / Εγγύηση 2 ετών / Gwarancja 2-letnia / Гарантия 2 года /  
Гарантія 2 років / Garanție 2 ani / 2-year guarantee

Чангжоу Глоуб Ко., Лтд, № 65, Синган Рoad, Чжунлоу Зон, Цзянсу, Китай.

Made In P. R.C. 2015