

1 Installation

CAUTION: To avoid electric shocks, deactivate your heating system at the main electrical panel. Read the instructions carefully before disconnecting the wires.

1.1 Installing a New Thermostat

For a new installation, select a position about 5 feet (1.5 m) above the floor, where there is good air circulation. The thermostat must be installed on an inside wall.

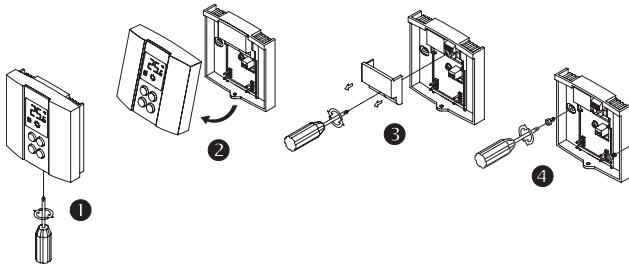
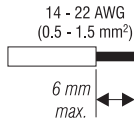
Avoid places where there are:

- air draughts (the top of a staircase, an air outlet,...)
- dead air spots (e.g., behind a door)
- direct sunlight
- chimneys or hidden pipes

1.2 Thermostat Installation

Remove the mounting plate from the thermostat.

- 1 Loosen the screw holding the mounting plate to the thermostat.
- 2 Lift the lower part of the plate to remove it from the thermostat.
- 3 Loosen the screw holding the wire cover, and remove it.
- 4 Secure the mounting plate to the wall and make the appropriate connection (refer to section 2).



1.3 Wiring

- 1 Refer to the diagram. Connect one wire to either terminal and the other wire to the other terminal.

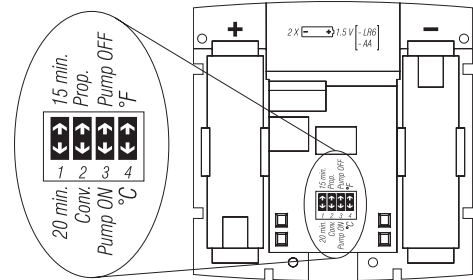


- 2 Put the wire cover back on.

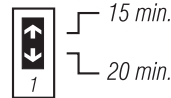
NOTE: If you have a CT240 telephone controller, refer to section 5.1 for hook-up.

2 Thermostat Configuration

Before installing the thermostat on the wall, it must be configured using the dip switches at the back.

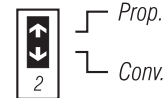


2.1 15- or 20-minute Cycles



The TH135 can operate on 15- or 20-minute cycles. While 15-minute cycles provide greater comfort, the heating system will be running more often.

2.2 Temperature Control Modes



You can choose between two temperature control modes:

Proportional Adaptive Mode

This mode analyses previous cycles in order to define the length of the upcoming cycle. This mode guarantees optimal regulation of 3 cycles (switch #1 to 20 min.) or 4 cycles (switch #1 to 15 min.) per hour, regardless of the season.

Ideal for:

- Radiant or convection electrical heating system
- Circulator control in a hot water system

Conventional Mode with Anticipation

This mode turns the system On or Off when the temperature reaches preset levels. This mode is compatible with all heating systems. It is recommended for a multi-zone system or when a thermostat directly controls a furnace equipped with a combustion gas purge cycle of more than 30 seconds.